

Chartering to Catalina

Where In The
World Is
Santa Catalina
Island?



Chartering to Catalina



Santa Catalina Island

- 22 miles SSW of LA, One of eight Channel Island's in archipelago
- Only island with significant permanent settlements
- Fly into LAX (Los Angeles Int'l) or SNA (John Wayne Airport)
- Five closest ports with charter companies.

Chartering to Catalina

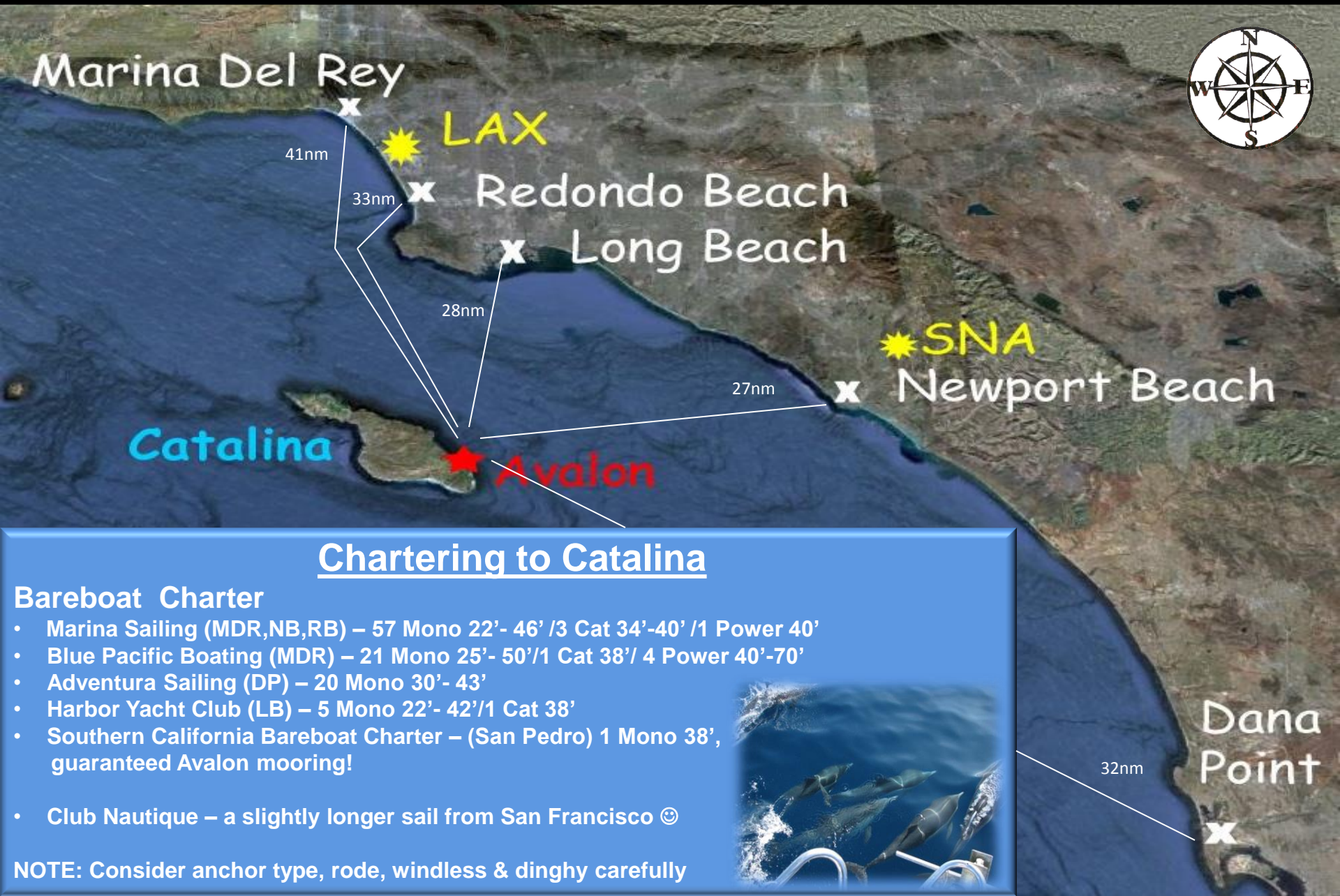


Getting to Catalina



- Ferry - 1-2 hours from all mainland locations
- Small plane – 15 minutes to Catalina airport. \$17 r/t Avalon shuttle
- Seaplane - 15 minutes from Long Beach Airport to Pebbly Beach
- Helicopter – 15 minutes from Long Beach & San Pedro to Avalon

Chartering to Catalina



Chartering to Catalina

Bareboat Charter

- Marina Sailing (MDR,NB,RB) – 57 Mono 22'- 46' /3 Cat 34'-40' /1 Power 40'
- Blue Pacific Boating (MDR) – 21 Mono 25'- 50'/1 Cat 38'/ 4 Power 40'-70'
- Adventura Sailing (DP) – 20 Mono 30'- 43'
- Harbor Yacht Club (LB) – 5 Mono 22'- 42'/1 Cat 38'
- Southern California Bareboat Charter – (San Pedro) 1 Mono 38', guaranteed Avalon mooring!
- Club Nautique – a slightly longer sail from San Francisco ☺

NOTE: Consider anchor type, rode, windless & dinghy carefully

Chartering to Catalina



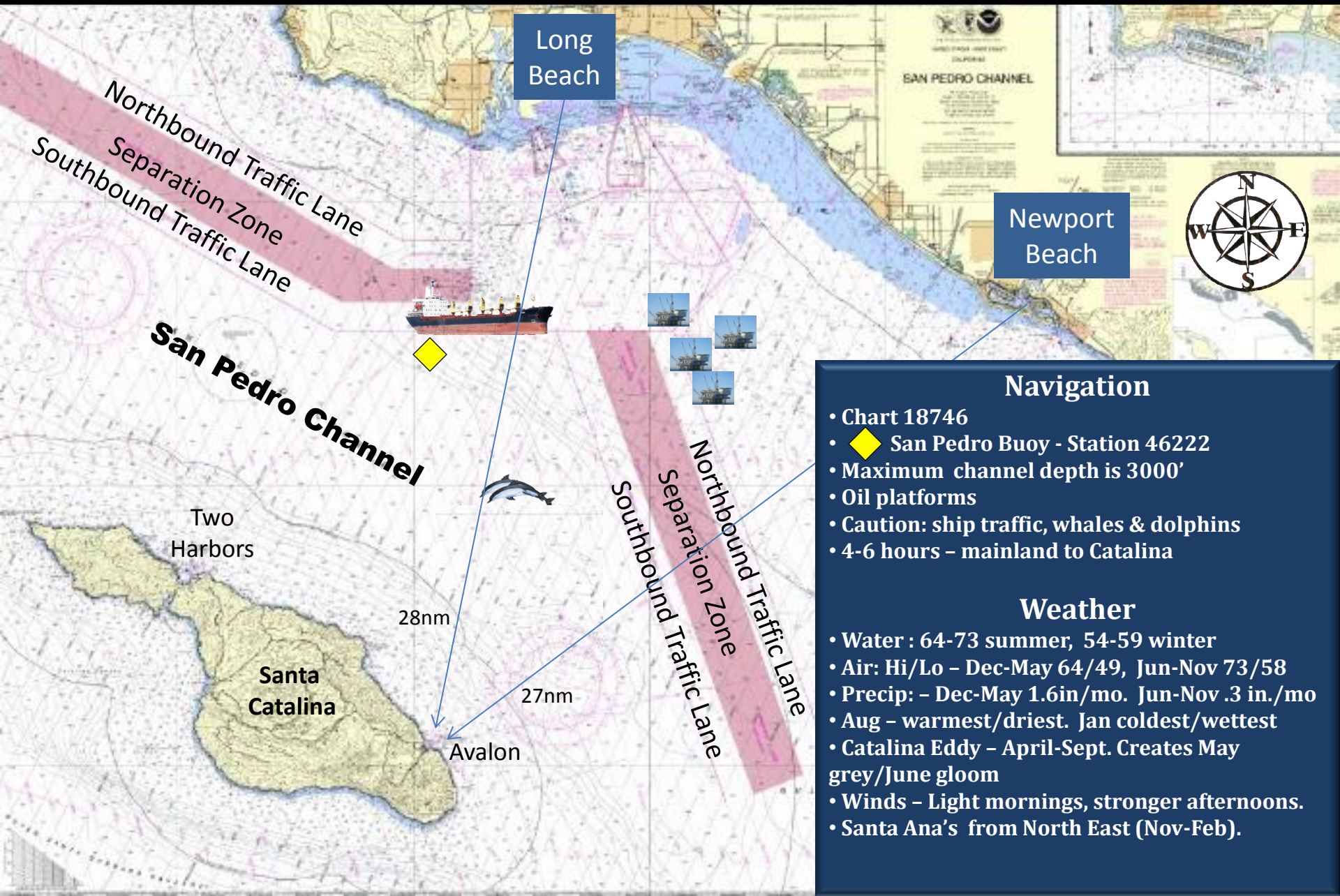
Itinerary & Cost



- 3 Adults, 4 days, Thu-Sun, Oct 14-17 2010
- 39' mono, Blue Pacific, MDR, 2 cabin, 2 head - \$1200 (\$400p/p)
- Flight SFO-LAX \$250p/p (unless you drive down)
- Rental car or taxi \$110 (\$37p/p) (unless you drive down)
- Provisions \$200 (\$66p/p) - Breakfast, lunch, snacks & one dinner on board.
- Mooring \$81 (\$27p/p)
- Fuel \$60 (\$20 p/p)

\$800 p/p not including on shore food & fun

Chartering to Catalina



Long Beach

Newport Beach

Northbound Traffic Lane
Separation Zone
Southbound Traffic Lane

San Pedro Channel

Northbound Traffic Lane
Separation Zone
Southbound Traffic Lane

Two Harbors

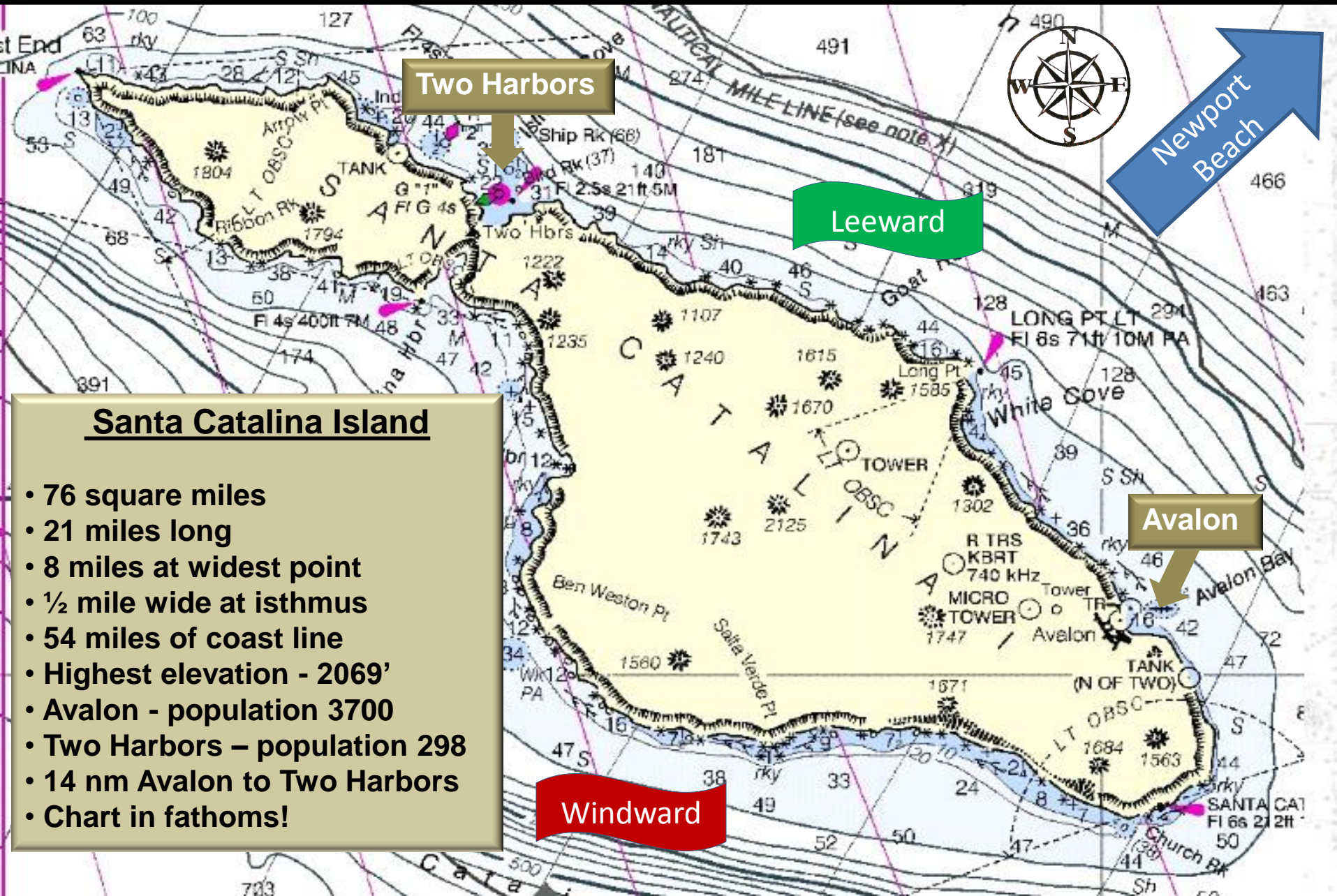
Santa Catalina

28nm

27nm

Avalon

Chartering to Catalina



Two Harbors

Leeward

Newport Beach

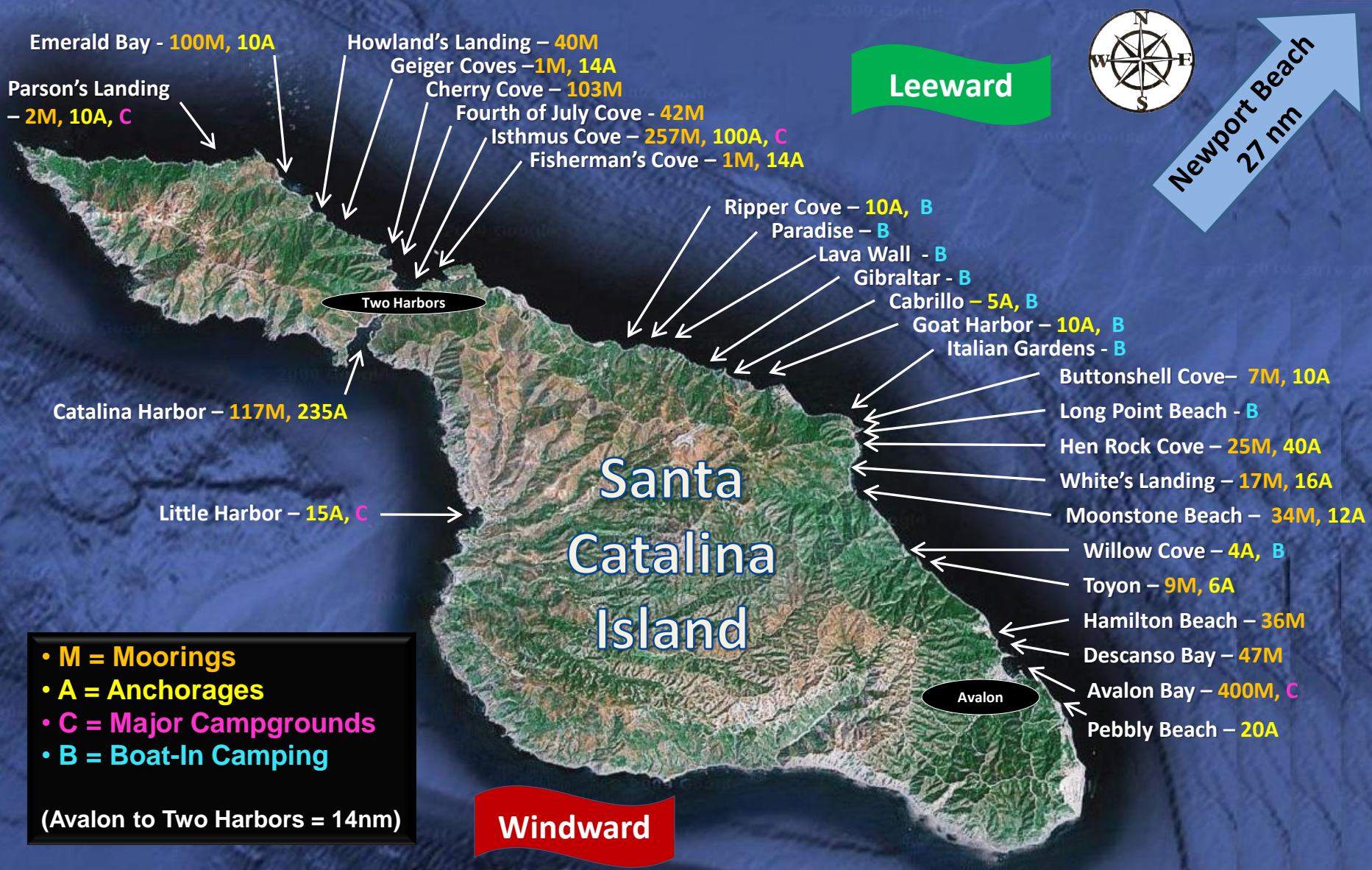
Santa Catalina Island

- 76 square miles
- 21 miles long
- 8 miles at widest point
- ½ mile wide at isthmus
- 54 miles of coast line
- Highest elevation - 2069'
- Avalon - population 3700
- Two Harbors – population 298
- 14 nm Avalon to Two Harbors
- Chart in fathoms!

Windward

Avalon

Chartering to Catalina



- **M = Moorings**
 - **A = Anchorages**
 - **C = Major Campgrounds**
 - **B = Boat-In Camping**
- (Avalon to Two Harbors = 14nm)

Disclaimer: Don't even think of utilizing this information for navigation and please contact your destination prior to departure to confirm any details alluded to in this document.

Copyright Captain Rod Witel 2011

Chartering to Catalina



Avalon Harbor
Entrance

Chartering to Catalina



Avalon Harbor
Entrance

Casino

Chartering to Catalina



Ferry Dock

Avalon Harbor
Entrance

Casino

Chartering to Catalina



Pier

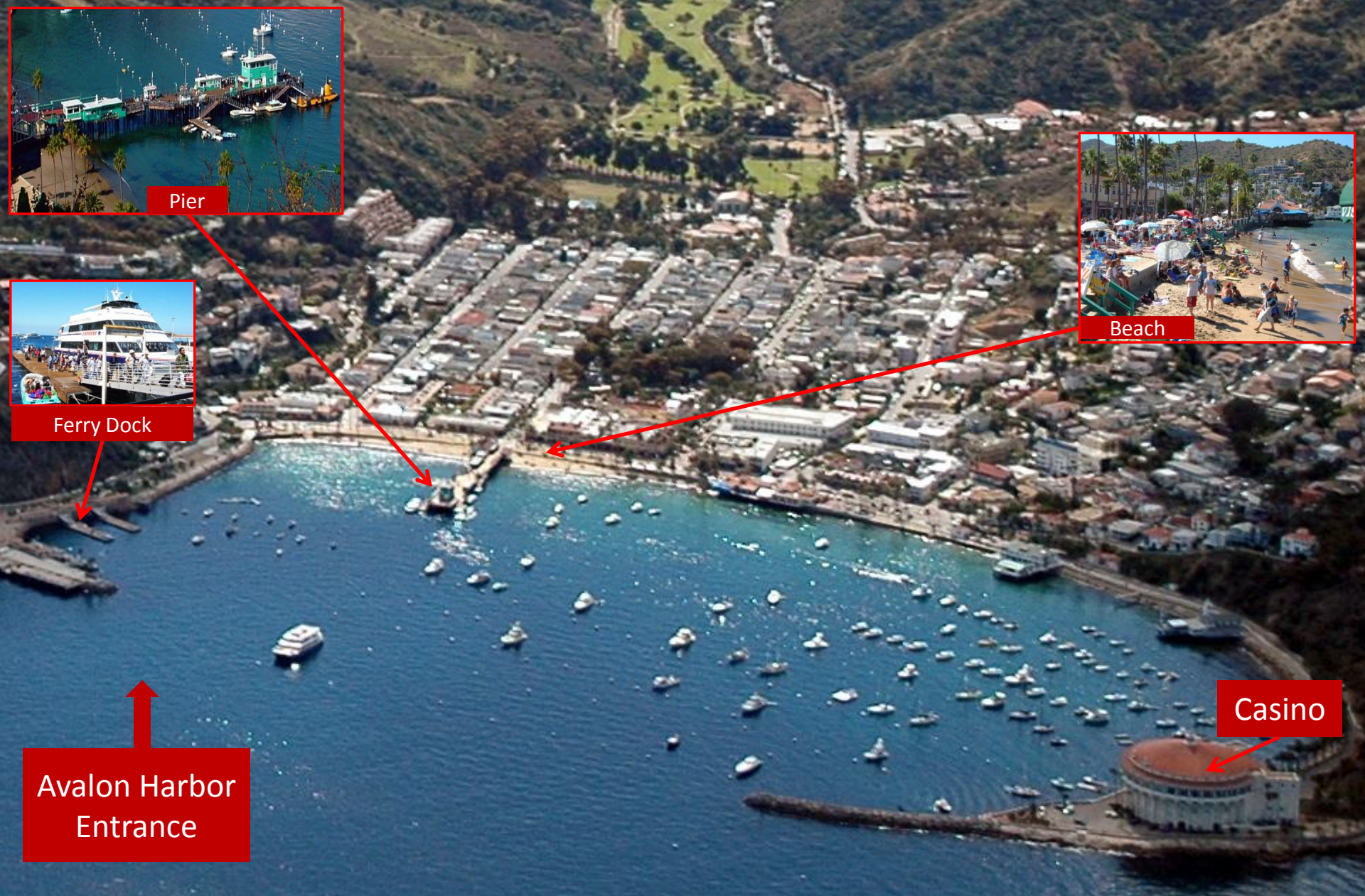


Ferry Dock

Avalon Harbor Entrance

Casino

Chartering to Catalina



Pier



Beach

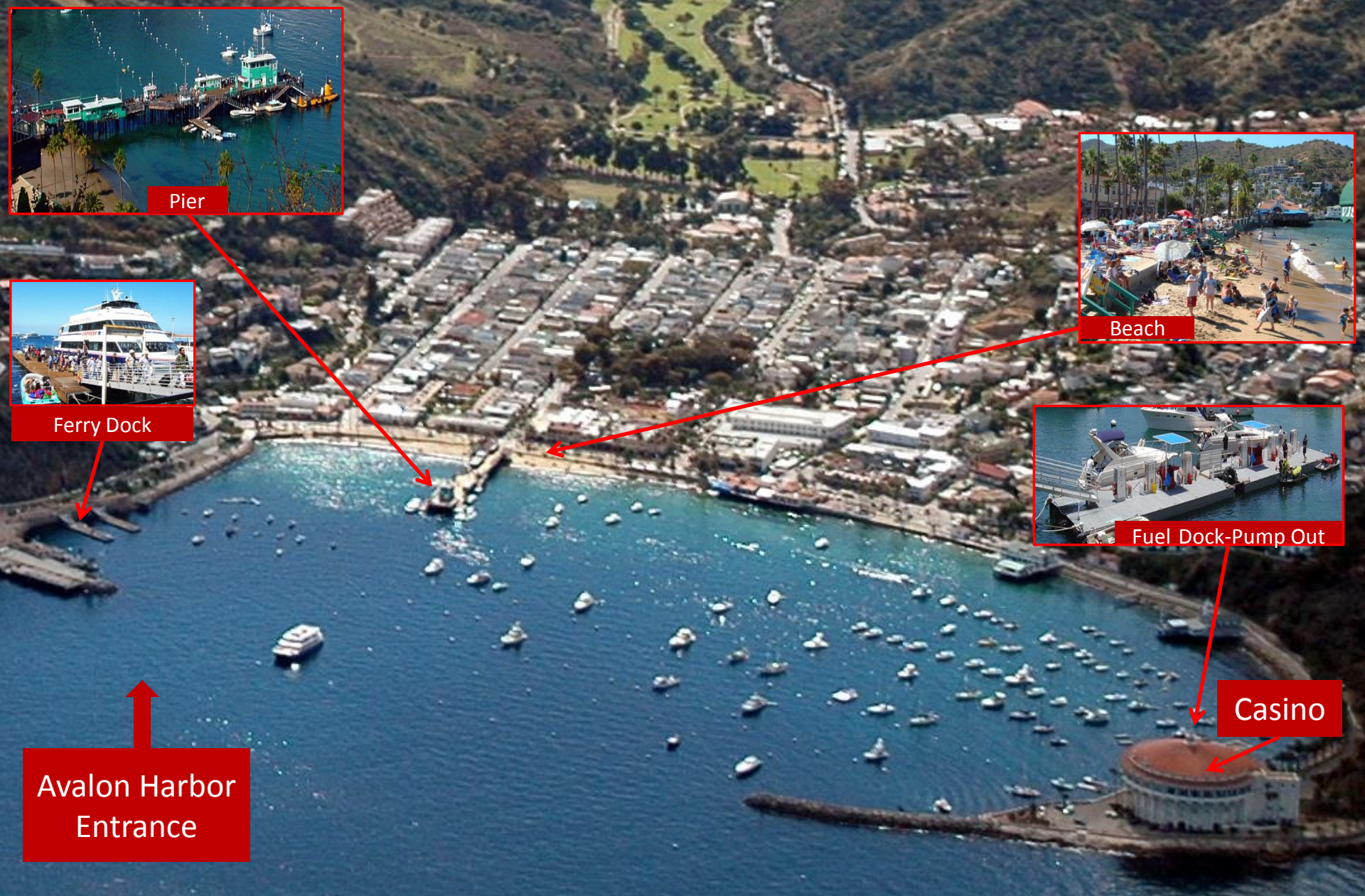


Ferry Dock

Casino

Avalon Harbor Entrance

Chartering to Catalina



Pier



Beach



Ferry Dock

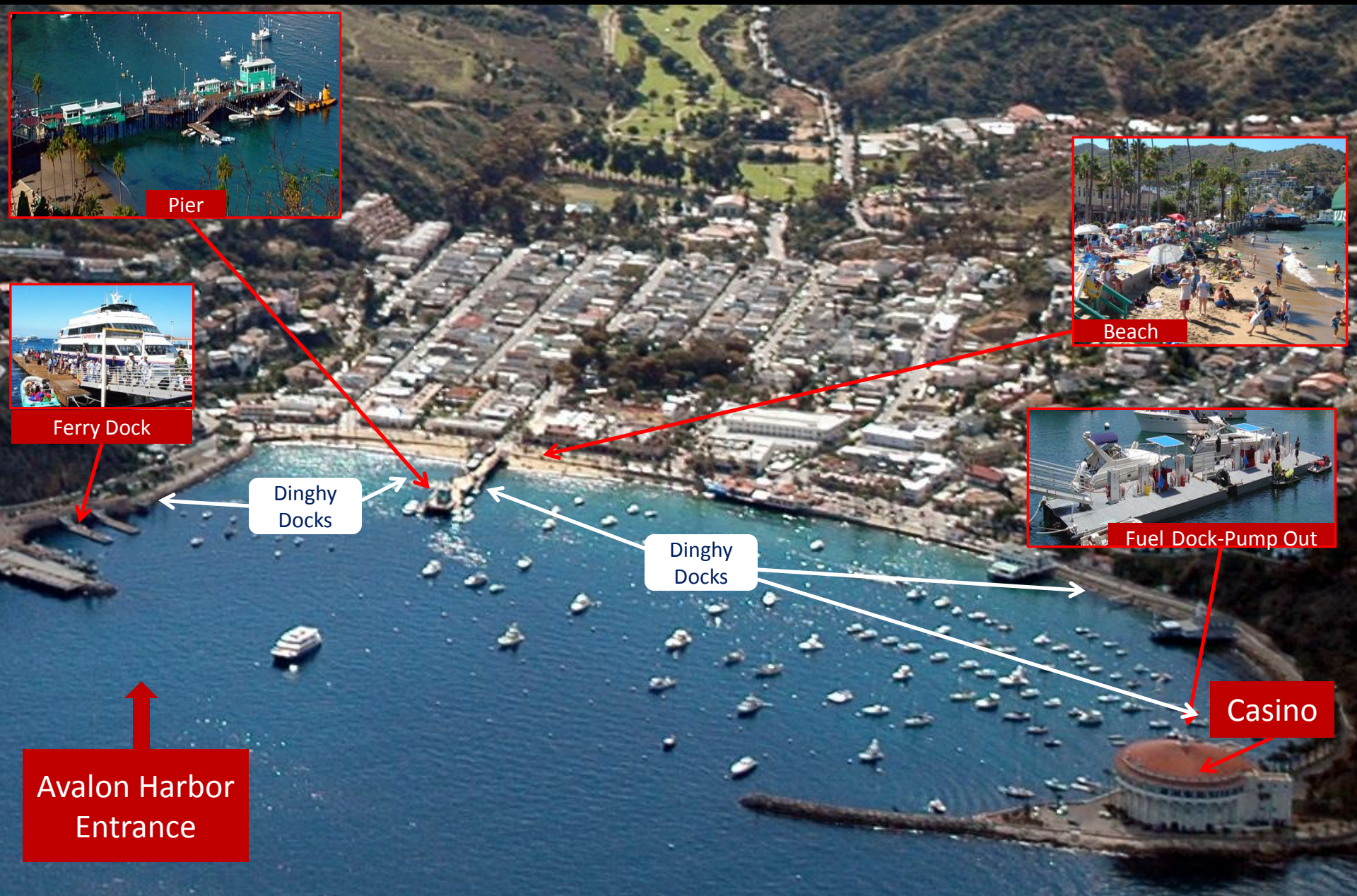


Fuel Dock-Pump Out

Avalon Harbor Entrance

Casino

Chartering to Catalina



Pier



Beach



Ferry Dock



Fuel Dock-Pump Out

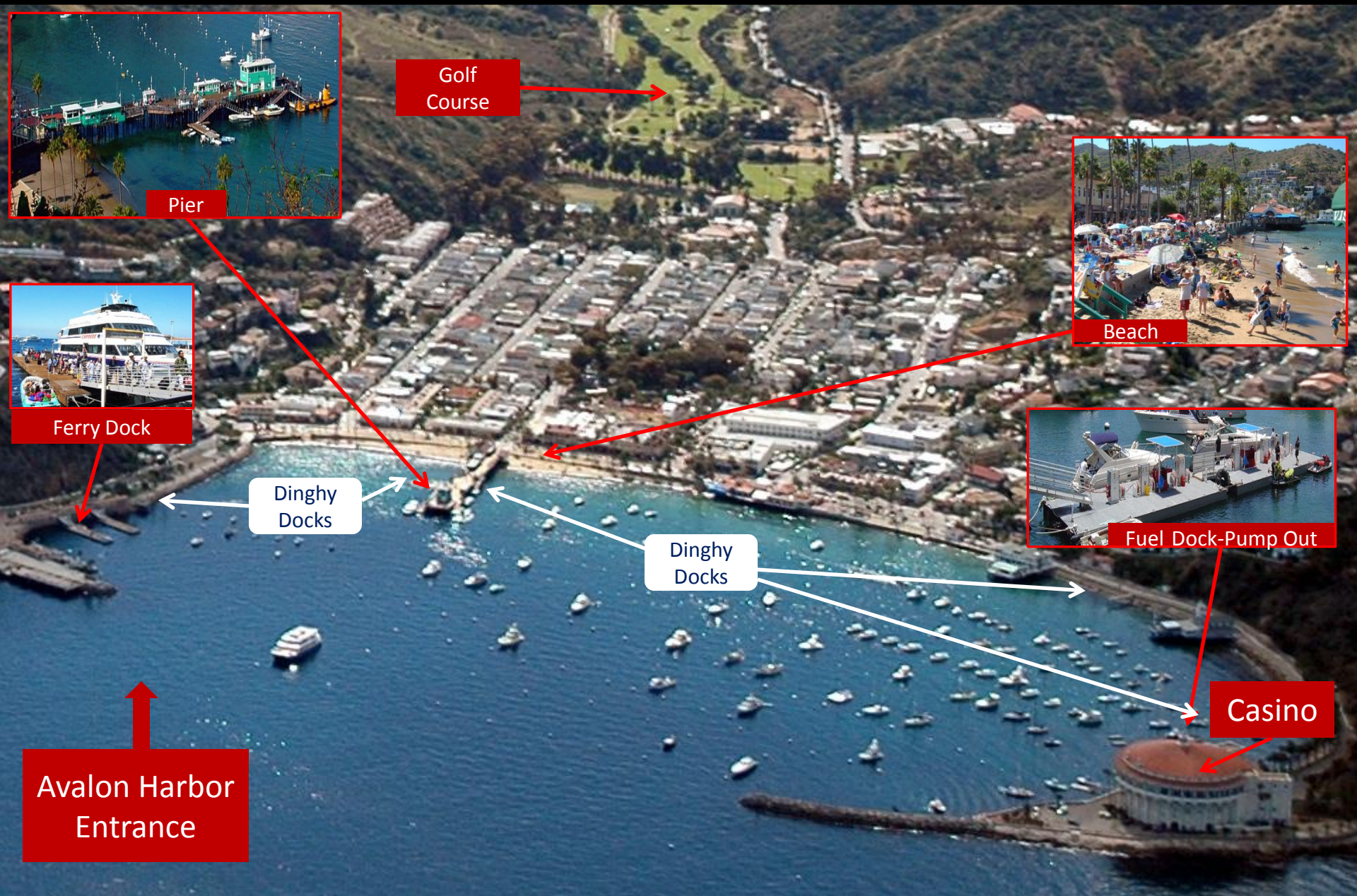
Dinghy Docks

Dinghy Docks

Casino

Avalon Harbor Entrance

Chartering to Catalina



Pier

Golf Course



Beach



Ferry Dock

Dinghy Docks

Dinghy Docks

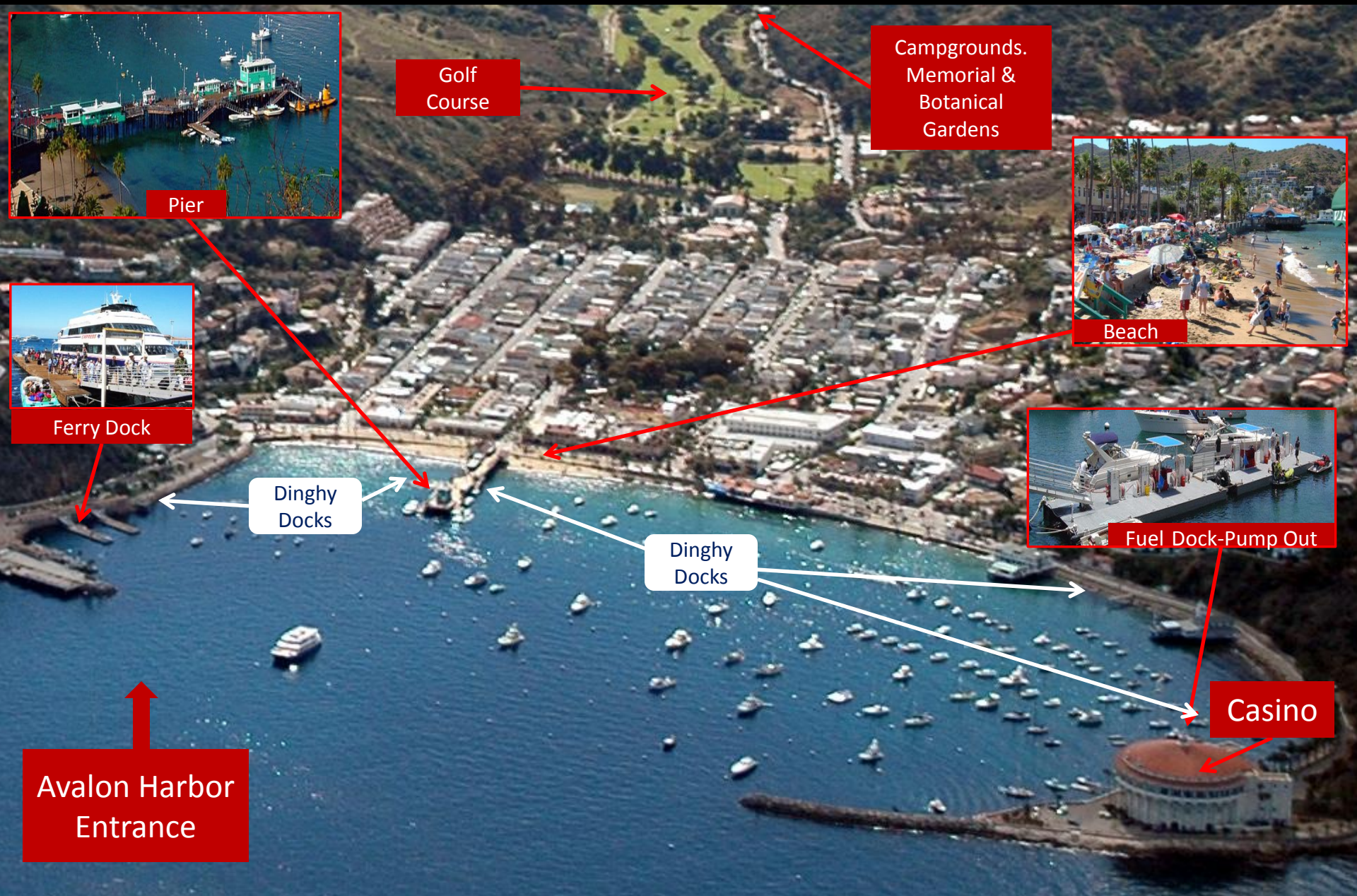


Fuel Dock-Pump Out

Avalon Harbor Entrance

Casino

Chartering to Catalina



Pier

Golf Course

Campgrounds, Memorial & Botanical Gardens



Beach



Ferry Dock

Dinghy Docks

Dinghy Docks

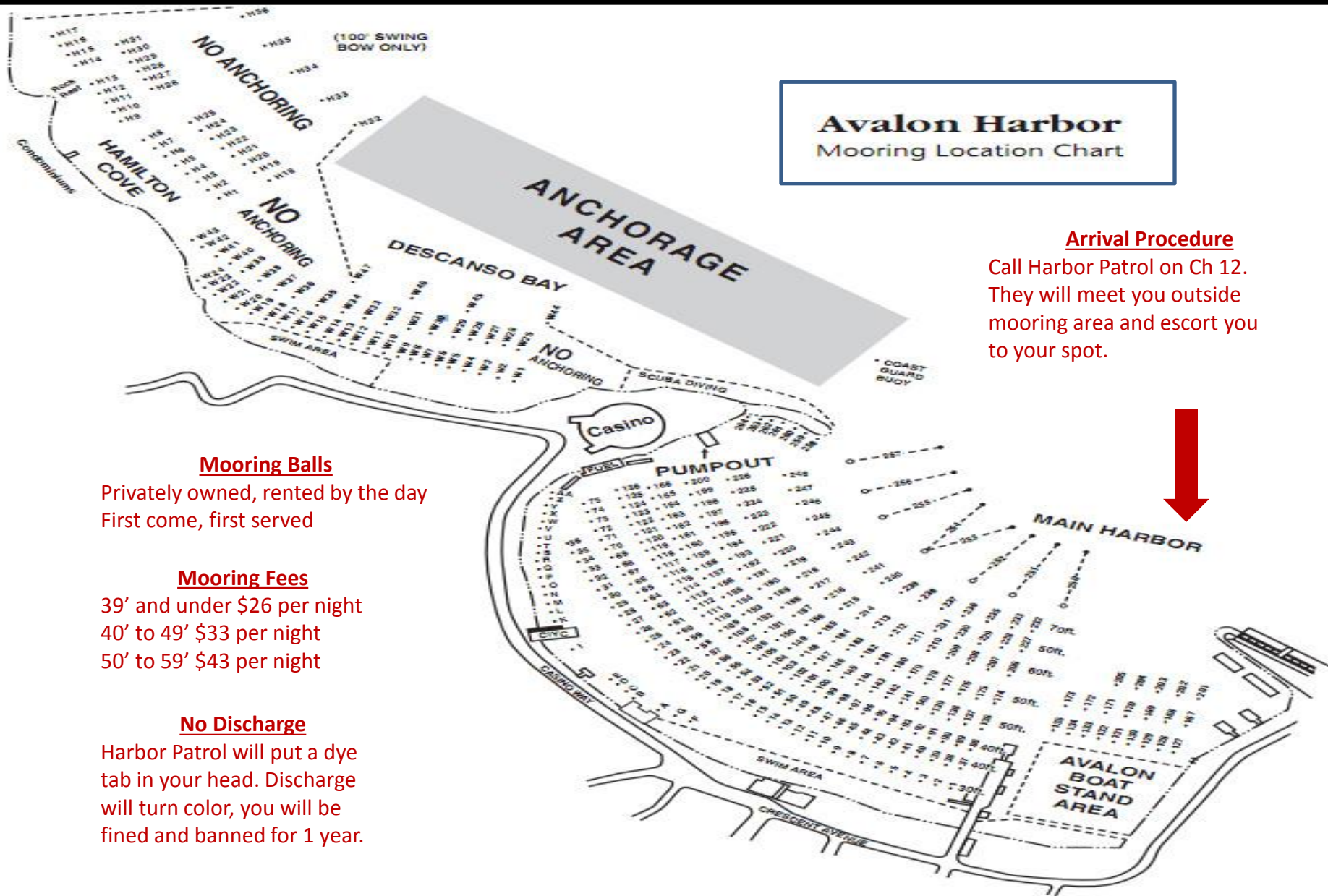


Fuel Dock-Pump Out

Avalon Harbor Entrance

Casino

Chartering to Catalina



Avalon Harbor
Mooring Location Chart

Arrival Procedure

Call Harbor Patrol on Ch 12. They will meet you outside mooring area and escort you to your spot.



Mooring Balls

Privately owned, rented by the day
First come, first served

Mooring Fees

39' and under \$26 per night
40' to 49' \$33 per night
50' to 59' \$43 per night

No Discharge

Harbor Patrol will put a dye tab in your head. Discharge will turn color, you will be fined and banned for 1 year.

Chartering to Catalina

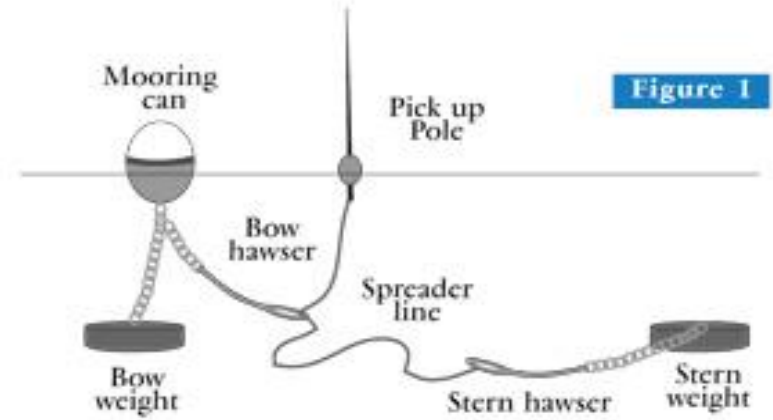


Figure 1

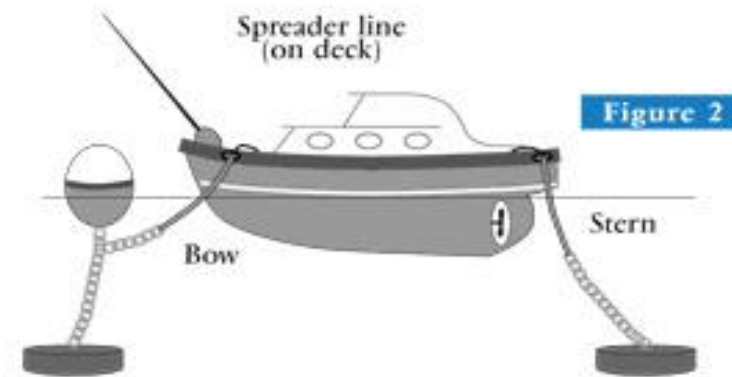


Figure 2

Mooring Usage

1. Pick up pole, attach bow hawser to bow cleat.
2. Run spreader line to stern of boat.
3. Take all slack out of spreader line and attach stern hawser to stern cleat.
4. Drop slack spreader line into water

Chartering to Catalina

Anchoring near Avalon

- No anchoring in mooring fields
- Anchorages close to Avalon are deep! 60'-300' with Kelp/Rocky bottom
- Wind - W to SW OK, NW to NE roly, NE to SE very roly!
- Water taxis do not pickup at Pebbly Beach!



Hamilton
Cove

Descanso
Bay

Avalon
Harbor

Pebbly
Beach

H

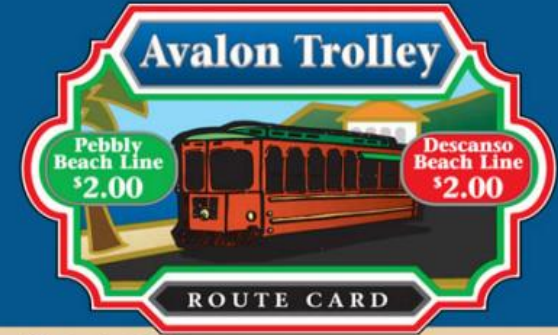
P

Chartering to Catalina



Ground Transportation

- CA regulates number of cars allowed on island.
- 10 year waiting list.
- There are no rental cars
- Walk – Avalon is only 1 square mile in size
- Rent Bicycle
- Rent golf cart (#1 tourist activity)
- Taxi or trolley
- Shuttle bus - airport, Two harbors and campgrounds.



Chartering to Catalina



Avalon Casino Ballroom & Movie Theatre

Casino in Italian means a “gathering place” (No gambling)
Host Concerts, New Year’s Eve gala, annual ball and Jazz Festival
Movie screen is 18’ high by 36’ wide

Built in 1929, 12 stories tall
Daily tours
Giant pipe organ



Chartering to Catalina



Wrigley

- William Wrigley Jr. (chewing gum magnate) bought Santa Catalina Island in 1919.
- Wrigley's 22 room house, built in 1922, is now a B&B called The Inn on Mt. Ada overlooking Avalon.
- The Chicago Cubs, owned by Wrigley, held spring training in Avalon from 1921-1951



Chartering to Catalina

Wrigley

- Wrigley spearheaded building the Casino and two steam ships to develop tourism.
- The Wrigley Memorial was built in 1933 just after Wrigley's death.
- A 38 acre botanical gardens was started by Wrigley's wife Ada.
- The Wrigley funded USC Wrigley Institute is a 14 acre marine lab near Two Harbors.
- In 1975 son Philip deeded Catalina to Catalina Island Conservatory who manages the island.



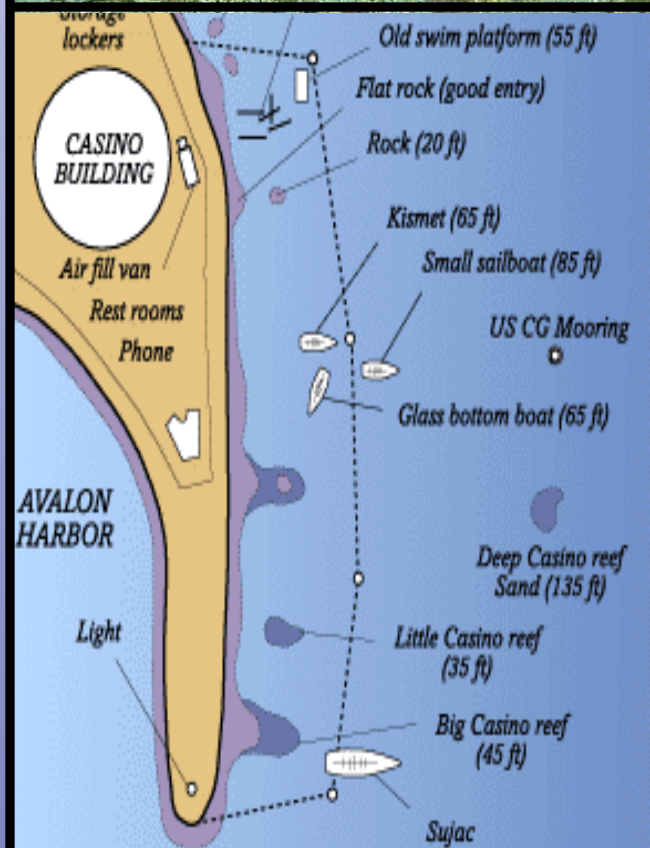
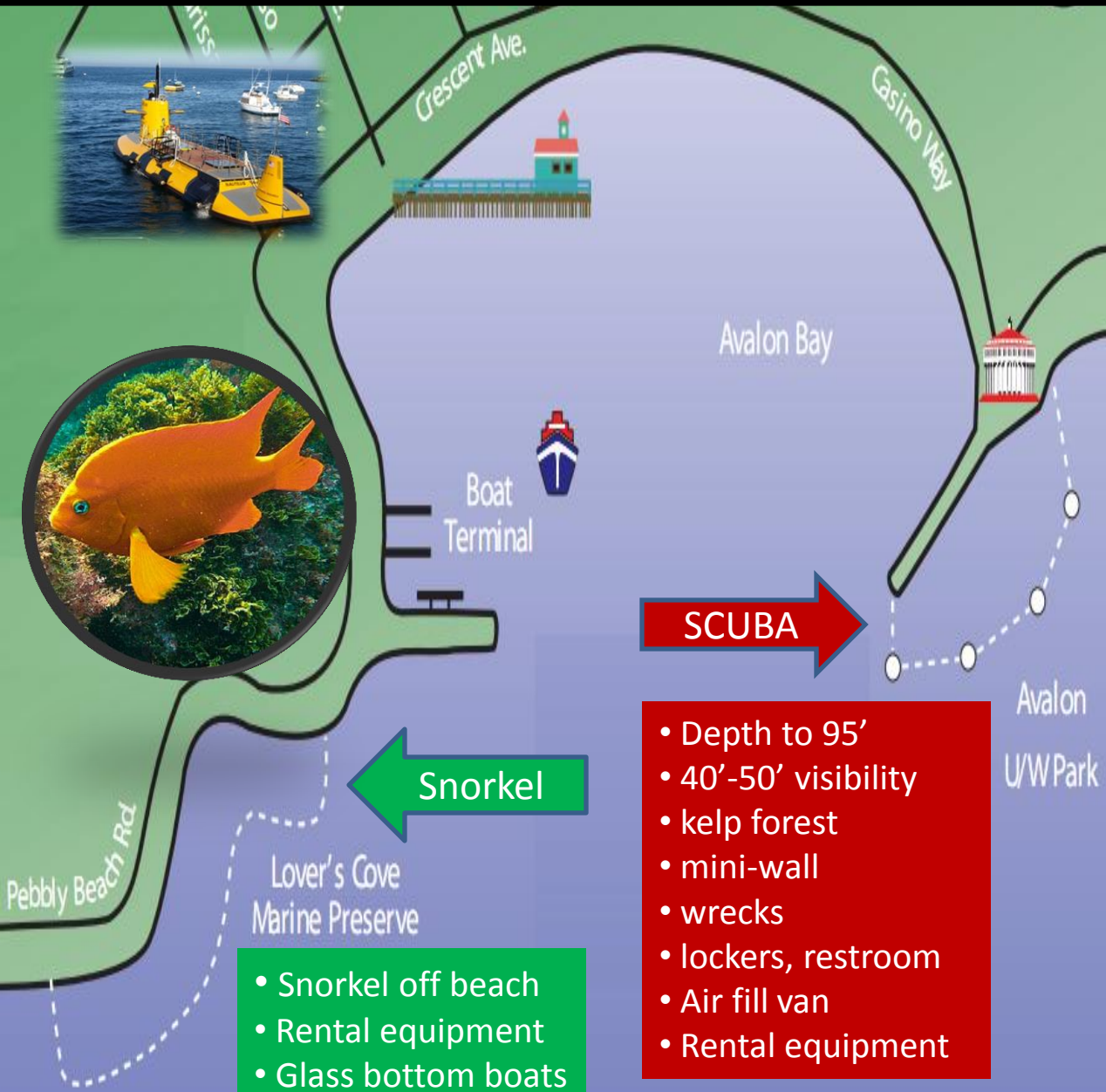
Chartering to Catalina

Water Activities (rentals)

motor boats - pedal boats - paddle boards - kayaks - fishing gear - snorkel gear - para-sailing - jet skiing



Chartering to Catalina



Chartering to Catalina



Segway Tours



Golfing



Buffalo Safari

Inland Activities

Golfing (9 hole) & mini golf - Zip line - Wildlife viewing – Camping - Hiking – Biking – Golf Cart Sightseeing Tours (Segway, Jeep, Hummer, Casino) – Shopping - Massage/Spas – Museums - Dining



Wildlife Viewing



Island Tours



Dining Out

Chartering to Catalina



- TWO HARBORS**
- Restaurant, bar & store.
 - Kayak & bike rentals.
 - Fishing gear, skiff, snorkeling & SCUBA rentals and excursions.
 - Volleyball, horseshoes, bocce ball, tennis racket, boogie board rentals.
 - Camping .



Windward



Catalina Harbor

Two Harbors

Fisherman's Cove 103M

Isthmus Cove 257M 100A

Fourth of July Cove 42M

Cherry Cove 103M

Harbor Reef
Bird Rock

Avalon

Leeward

Emerald Bay

Chartering to Catalina

Leeward

Isthmus
Cove

Two Harbors

Catalina Light
Fl 4s 400' 7M

Catalina (Cat)
Harbor
117M, 235A

Windward

½ mile walk from Isthmus Cove or 15
nautical mile sail around west end

Chartering to Catalina



Descanso Beach (400 yards west of Avalon) – moorings, beach bar, kayaks-beach chair & cabana rentals, showers, changing rooms, weddings



Emerald Bay - (2 miles west of Isthmus Cove).

- 100 moorings, 10 anchorages
- Dock & buildings are private and belong to the Boy Scouts
- One small beach leased by Corsair Yacht Club.
- Large sandy beach seems to be public. Can walk to Two Harbors
- Great snorkeling & SCUBA at Indian Rock

Chartering to Catalina



Little Harbor Campgrounds

- Rated “one of the best campgrounds in the west” by Sunset magazine
- 7 miles east of Two Harbors, 16 miles from Avalon
- 23 campsites, 8 group areas
- Showers, Fresh water
- Toilets
- Kayak and snorkel gear rentals



Parsons Landing Campgrounds

- 7 miles west of Two Harbors
- 2 miles from Emerald Bay
- 8 campsites up to 6 people each.
- Toilet
- Firewood and 2.5 gallons of water included in your fee



Two Harbors Campgrounds

- On bluff overlooking Ocean, ¼ mile from Two Harbors
- Tents and tent cabins
- 32 campsites, 3 group areas
- Showers
- Fresh water
- Toilets

Chartering to Catalina



Old Ironsides – 1926



Mutiny On The Bounty – 1935



The Glass Bottom Boat – 1966



Chinatown - 1974



Yellow Tail – 2009



Black Sea Bass - 1909



Sunfish – 1910



Flying Fish – Annual festival

Chartering to Catalina



Questions?



Chartering to Catalina

Southern California Bareboat Charter Companies

(DP=Dana Point, LB=Long Beach, MDR=Marina Del Rey, NB=Newport Beach, RB=Redondo Beach)

- Marina Sailing (MDR,NB,RB) – 57 Mono 22'-46' /3 Cat 34'-40' /1 Power 40' <http://marinasailingclub.com/>
- Blue Pacific Boating (MDR)- 21 Mono 25'-50'/1 Cat 38'/ 4 Power 40'-70' <http://www.bluepacificboating.com/>
- Adventura Sailing (DP) - 20 Mono 30'-43' <http://www.aventurasailing.com/>
- Harbor Yacht Club (LB)- 5 Mono 22'-42'/1 Cat 38' <http://www.harboryc.com/>
- SoCal Bareboat Charter (San Pedro) - 1 Mono 38', Avalon mooring <http://southern-cal-bareboat-charter.com/>

Santa Catalina Island Information

- Catalina Island - <http://www.catalina.com/>
- Chamber of Commerce - <http://www.catalinachamber.com/>
- Santa Catalina Island Company - <http://www.visitcatalinaisland.com/>
- Interactive Island Map - <http://www.catalinachamber.com/catalina/map-of-catalina-island>

Navigation & Boating

- NOAA San Pedro Buoy - http://www.ndbc.noaa.gov/station_page.php?station=46222
- Boating Info - <http://www.catalina.com/yachting.html>
- Two Harbors newsletter - http://www.visitcatalinaisland.com/twoHarbors/PDFs/TH_Newsletter.pdf
- Two Harbors boating guide - <http://www.channelcruisingclub.com/documents/BoatersGuide.pdf>
- Cruising Guide - Cruising Guide To Southern California's Offshore Islands by Brian M. Fagan

Chartering to Catalina

Santa Catalina – harbors, coves, beach and points of interest

ABALONE POINT 600-yds E of Avalon Bay. Anchorage is in 60-80 feet of water but not good for staying overnight.

ARROWPOINT 3.3M E of West End, N side of island. Ashore is the University of Southern California Marine Facility.

AVALON BAY See *Avalon Bay* section.

BEN WESTON BEACH (Also known as *Mills Landing*), 3.6M SE of Catalina Harbor on the S side of the island. No moorings and unsafe anchorage.

BEN WESTON POINT S side of island near *Ben Westdfi Beach*.

BIG FISHERMAN COVE Located in the E part of Isthmus Cove on N side of island, a small, but it is said to be the only shelter against Santa Ana winds on the N shore of Catalina Island. The cove is overnight anchorage for large and small pleasure boats, which frequently fill it during the summer. Permission must be obtained from USC Marine Facility. If Santa Ana wind emergency use OK. The facility is a 30,000 square foot laboratory building originally built 25 years ago. The facility also includes its own dock and moorings at the isthmus, as well as a helicopter landing pad.

BIG GEIGER COVE 1.5M W of Isthmus Cove. No moorings, but anchorage for 10 boats. Shore is leased to Blue Water Cruising Club.

BINNACLE ROCK 1000-yds W of Church Rock, S side.

BIRD ROCK Off Isthmus Cove (Two Harbors), N side of island.

BLACK POINT 1.35M E of West End (N side of island).

BLUE CAVERN POINT has a number of caves here, one of which you can row all the way into with your dinghy. 1M E of Isthmus Cove. We suggest you drop off a dinghy to go exploring the caves or motor over from Isthmus Harbor.

BUTTONSHELL BEACH Immediately E of Long Point has 7 moorings, anchorage for 10, good W-NW wind anchorage. Shore leased to Glendale YMCA for its Camp Fox with pier.

CABRILLO BEACH also called Little Gibraltar after the large rock offshore. 2M W of Long Point; no moorings, anchorage for 5-7 in 30-50 ft sand protected from WNW. Shore leased to Long Beach Boy Scouts. Camping.

CACTUS BAY 0.9M SE of West End, S side of island.

CAPE CORTES (Also known as *Trident Point*), 1.2M W of Catalina Harbor.

CASINO POINT Avalon Bay-harbor

CATALINA HARBOR See Catalina Harbor section.

CATALINA HEAD At Catalina Harbor — S side of island.

CHERRY COVE Named for a grove of Catalina cherry trees growing up the canyon. There are 103 moorings but no anchorages. 0.5M W of Isthmus Cove. Popular day anchorage for yachts using the facilities at Isthmus Cove (Two Harbors). There are a number of private moorings but the shore areas are leased. To get a mooring call the harbor patrol on VHF channel 9. They will meet you in Cherry cove and give you a mooring assignment. Camp Cherry Cove (run by the San Gabriel Valley Council Boy Scouts) is located ashore, so there is no landing. Diving & snorkeling is good.

CHINA POINT 7.2M W of Church Rock, S side near E end of island.

CHURCH ROCK E end of island.

Chartering to Catalina

Santa Catalina – harbors, coves, beach and points of interest

DESCANSO BAY 600-yds W of Avalon Bay. Has 47 moorings and 65-85 ft depth. Dinghies are prohibited in swim area, and beach landing is prohibited.

Dinghies are prohibited in swim area, and beach landing is prohibited.

DOCTOR'S COVE 350-yds W of Emerald Cove, N side of island.

EAGLE REEF 1.1M W of Isthmus Cove, N side of island.

EMERALD BAY has the best of everything on Catalina; a great beach (second best only to Little Harbor's beach), 2M W of Isthmus Cove has about 97' moorings. Shore leased to Great Western Council Boy Scouts. great snorkeling in the emerald water amongst the reef, moorings (so you don't have to anchor) and great hiking. There is a small yacht club and boys scout camp on shore. 2-miles west of Isthmus cove. It has 99 moorings and anchorage for 5-10 boats. A Salad Bowl boat comes around and will pick up your trash for \$1. Also a shore boat will take you into Two Harbors for \$4.50 just call them up on VHF channel 9. Danger: Watch out for the reef! Only enter from the east end of the cove by rounding Indian Rock.

EMPIRE LANDING is 2.6 miles east of Isthmus Cove and has 2 private moorings\dock for emergency only. anchorage for 20. There is a quarry here on the site of an old Indian one. Area is leased to Connolly Pacific Company.

FARNSWORTH BANK 9.2M SSE of West End and 1.6M offshore, has a least known depth of 8 fathoms over it.

FOURTH OF JULY COVE Immediately W of Isthmus Cove and has about 42 moorings. Shore is leased to San Gabriel Boy Scouts and 4th of July Yacht Club. No anchorage.

FROG ROCK 1.3M W of Avalon Bay, N side of island.

GALLAGHERS BEACH 2M W of Avalon Bay o N side of island. No moorings, anchorage for 3-5. Shore leased to Intervarsity Christian Fellowship."Campus-by-the-Sea" religious group.

GOAT HARBOR is 1.6 miles west of Long Point. No moorings, and has anchorage for 5-10 boats in 5-40' sand. The harbor is unprotected. Good day anchorage. You can land. Catalina Yurt Cabins are ashore for campers.

HAMILTON BEACH 600-yds W of Avalon Bay on N side of island. Thirty Six (36) moorings and uncomfortable anchorage.

HEN ROCK COVE is .2 miles west of White's Landing. Has about 24 moorings, and anchorage for 10 boats. Good in west-north west wind. Grass bottom. Another good skin diving area. Shore is leased by the Balboa Yacht Club.

HOWLANDS LANDING is 1.8 miles west of Isthmus Cove and has about 40 moorings, but no anchorages. The is a small beach area is used by the Los Angeles Yacht Club. The main beach and canyon area is used by the Catalina Island boys and girls club.

INDIAN HEAD ROCK 3.1 M SE of Catalina Harbor, S side of island.

INDIAN ROCK 2.1 M W of Isthmus Cove off Emerald Cove, N side of island.

IRON BOUND COVE 2.6M SE of W end on S side of island, or 4M W of Catalina Harbor. No moorings, exposed but fairly secure anchorage.

ISTHMUS COVE has about 245 moorings and a string line for 42 boats 25 feet or less as well as room for about 100 boats to anchor in up to 60' of water, give or take a few depending upon the flotilla boat size. Moorings are maintained and leased by the Catalina Cove and Camp Agency who handles all moorings outside of Avalon Harbor. They operate a patrol boat that will meet you at the entrance to whichever cove you choose or can be reached on Channel 9. Be patient, they'll get to you next. Moorings are stern and bow ties. Like Avalon, moorings are on a first come, first served basis and are assigned upon arrival. It provides good shelter in south weather, but dangerous in north west weather. Also, you can get a mooring for a few hours at the Isthmus for free. All services (dinner reservations, cross channel carrier information\reservations, Safari Bus\Avalon Shuttle service are handled by Isthmus Base. You can reach them on VHF channel 66. Dangers: Isthmus Reef is a navigation hazard, marked by a 25 foot tower (post) in the middle. The reef shows at low tide.

Chartering to Catalina

Santa Catalina – harbors, coves, beach and points of interest

ITALIAN GARDENS is 3/4 of a mile west of Long Point. No moorings, anchorage in 30-90 ft. sand\kelp, with some protection. Anchor with bow and stern hooks as close to big rock on right side as you enter. If you get lucky, there is a hook on the rock that you can tie your stern anchor to. Nice beach for swimming or relaxing but no hiking. Snorkeling is not to good, poor visibility.

JEWFISH POINT 1.8M E of Avalon Bay, N side of island, is the S end of a rock quarry.

JOHNSON ROCKS 0.8M E of West End N side of island.

JOHNSON'S LANDING At Emerald Cove, N side of island.

LION HEAD POINT 0.7M W of Isthmus Cove.

LITTLE FISHERMAN COVE At Isthmus Cove and moorings are included with Isthmus Cove. Shore facilities are leased to the King Harbor Yacht Club and the Channel Cruising Club. Camp and barbecue facilities available through the Catalina Cove and Camp Agency.

LITTLE GEIGER COVER 1.5 miles west of Bird rock at Isthmus Cove on and .5 miles south west of Eagle Reef Red Buoy "2". Good fair weather anchorage. One mooring, and anchorage for 3 boats. Bow and stern anchors are advised. The shore is leased by the Offshore Cruising Club.

LITTLE GIBRALTAR POINT 2.2M W of Long Point, N side of island.

LITTLE HARBOR 3M S of Catalina Harbor entrance channel on S side of island. No moorings, anchorage for 10-15. Excellent anchorage inside reef 15-ft sand. **DANGER ZONE** - BEWARE REEF out from N shore 1/3 across, submerged at high tide.

LOBSTER BAY 0.85M W of Catalina Harbor, S side of island.

LONG POINT is 4 miles west of Avalon on north side of Island (lighted). Flashing white every 5 seconds. The point is 71 feet above sea level. The light is located at Lat: 33/24.4/N Long:118/21.9/W. The light is obscured from 021Deg to 070Deg.

LOVER'S COVE Adjacent to Avalon Bay N side. No moorings or anchorages in this marine preserve.

MILLS LANDING (Also known as Ben *Weston Beach*). 3.6M SE of Catalina Harbor, S side of island.

MOONSTONE BEACH 3.5M NW of Avalon Bay and immediately next to White Cove on N side of island. About 34 moorings, anchorage for about 12, good in W wind. Shore is leased to Newport Harbor Yacht Club.

PALISADES ANCHORAGE 2.4M W of Church Rock on S side of island near E end. Anchorage good in Santa Ana's.

PARSONS LANDING 2.6M E of West End light. Two (2) moorings, anchorage for about 10 in kelp to 50-ft. Good beach, leased to Catalina Management Service for public camping. Good landing. No moorings and unsafe overnight anchorage

PIN ROCK At Catalina Harbor, S side of island.

PINNACLE ROCK 1M E of Avalon Bay, N side of island.

RIBBON ROCK 2.9M SE of West End, S side of island. Shows as a dark vertical rock wall with a gigantic ribbon of quartz veining that is visible for many miles.

RIPPER'S COVE 4M E of Isthmus Cove immediately W of Empire Landing on N side of island. No moorings, anchorage for about 10 in good sand with fore-aft anchors. No lessee. Camping and hiking.

ROCK QUARRY 1.8M E of Isthmus Cove and 1M E of Avalon, N side of island.

SALTA VERDE POINT 5M W of Church Rock, S side of island.

SANDY BEACH See *Emerald Cove*.

SEAL ROCKS Extreme E end of island. California Sea Lions all year.

Chartering to Catalina

Santa Catalina – harbors, coves, beach and points of interest

SHARK HARBOR Immediately S of Little Harbor on S side of island and 3M SE of entrance channel to Catalina Harbor. **DANGER ZONE** - UNSAFE ANCHORAGE and has no moorings.

SHIP ROCK At Isthmus Cove, .N side of island.

SILVER CANYON LANDING 3.5M W of Church Rock, S side of island. No moorings, anchorage in 30-70 ft sand, some W protection. No lessee. Landing is risky, but fewest breakers at SW corner. Canyon stream flows part of the year.

STAR BAY 1.4M SE of West End, S side of island.

STONY POINT 0.9M W of Arrow Point, N side of inland.

TOYON BAY 2.2M W of Avalon Bay on N side of island. About 9 private moorings, fair anchorage for about 6. Shore leased to Catalina Island Marine Institute.

TRIDENT POINT (Also known as *Cape Cortes*). 1.2M W of Catalina Harbor, S side of island.

TWIN ROCKS 1.2M W of Long Point, N side of island.

TWO HARBORS (Isthmus Cove/Catalina Harbor). 6M E of West End of Island on N side of island.

WEST END Extreme W end of island

WHALE ROCK 2.5M W of Catalina Harbor, S side of island.

WHITE COVE anchorage in about 8 fathoms and provides almost the same protection as found at Avalon, The beach in White Cove is known as White's Landing. 17 moorings, anchorage for 16. Affords anchorage in about 8 fathoms of water and provides good protection. The main portion of the beach is leased to the Los Angeles Girl Scouts.

WILLOW COVE is an unprotected cove with a small beach and cave. Hiking is very advanced with steep hills to climb. There is an old chimney ruin on top of one of the cliffs. Willow Cove is 2.4 miles west of Avalon Bay next to Toyon Bay. No moorings, but there is room for about 4 boats in 10-40 feet of sand.

Chartering to Catalina



POSTAGE
1 1/2 ¢
WITHOUT
MESSAGE

Chartering to Catalina



Chartering to Catalina

C-46—Steamer "Catalina", Santa Catalina Island, California



Chartering to Catalina



Chartering to Catalina



THE S. S. AVALON AND S. S. CATALINA AT DOCK—CATALINA CASINO IN BACKGROUND—SANTA CATALINA ISLAND.

Chartering to Catalina

C.24 RESIDENCE OF WM. WRIGLEY, JR., AVALON, CATALINA ISLAND, CALIFORNIA



Chartering to Catalina



Chartering to Catalina

C-36—Sun Bathers on Beach at Avalon, Santa Catalina Island, California



WA-M412

Chartering to Catalina

7666. Glass Bottom Power Boat "Empress,"
Avalon, Santa Catalina Island, Calif.



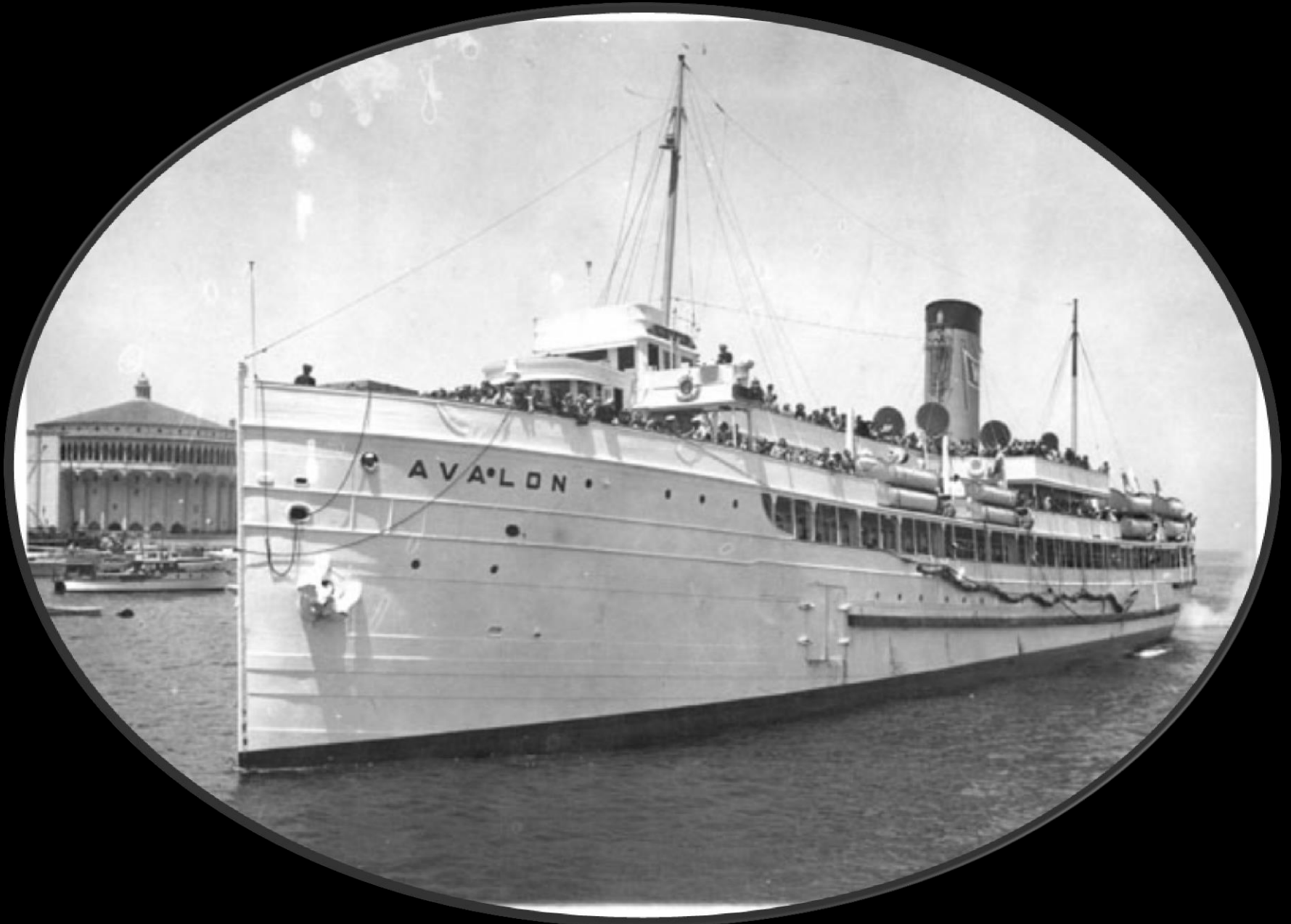
Chartering to Catalina



C-12 CASINO AND STR. "CATALINA" FROM HOTEL ST. CATHERINE, CATALINA ISLAND, CALIFORNIA

5A-H867

Chartering to Catalina



Chartering to Catalina

Arrival of Steamer at Santa Catalina Island, California



Chartering to Catalina



Chartering to Catalina



Chartering to Catalina

